

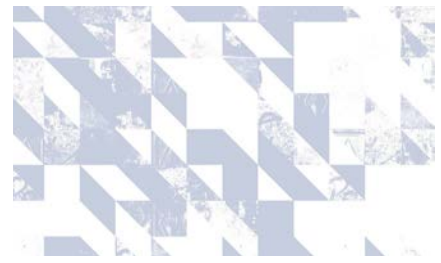


Disintegration

(646) 431-2472
Info@MerendaWallpaper.com
MerendaWallpaper.com

Disintegration—named after an album by The Cure—is a collage of photographs taken during days of walking through the streets of Havana, arranged in and filled with textures that are dissolving and reemerging in triangular forms. Merenda loved the way people used what they had to create patterns in Havana’s architecture. By using pieces of broken tile and plaster—and recycling what was around them—people created compositions of playful colors that work off of one another, creating vibrant mosaics.

- **Sizes:** 52” wide per yard on a continual bolt OR by panel (either 9’, 10’6” or 12’ long)
- **Pattern Repeat for Black and White and Blue Tones:** 104” wide by 127” long
- **Pattern Repeat for Morning Glory and Watermelon:** 52” wide by 63.5” long
- **Pattern Match:** Straight (can be hung randomly if preferred)
- Paper comes untrimmed.
- Learn about our substrate offerings at MerendaWallpaper.com/FAQS.
- All of our designs are digitally printed to order, which allows us to print **custom panel lengths** for a unique wall height. Please contact Info@MerendaWallpaper.com for custom lengths, pricing or additional substrate options.



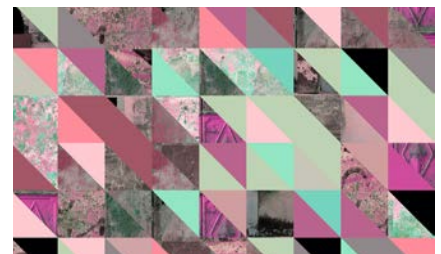
Sky on White



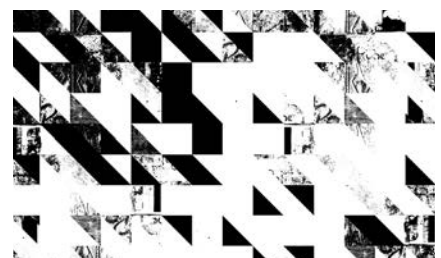
Blue and White



Morning Glory



Watermelon



Black and White



Scan the QR code with the camera on your mobile device to view the pattern in your room digitally.